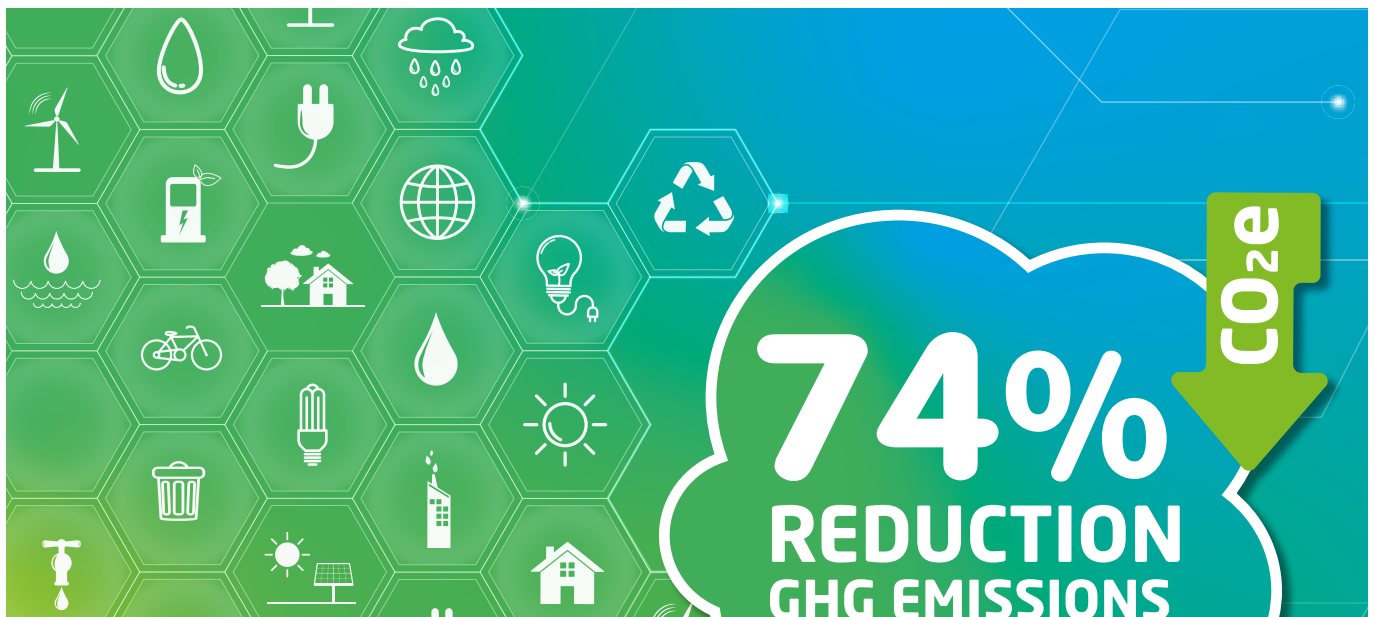


Environmental Performance 2020-21 - Summary



Leicestershire County Council's Performance

Greenhouse Gas Emissions

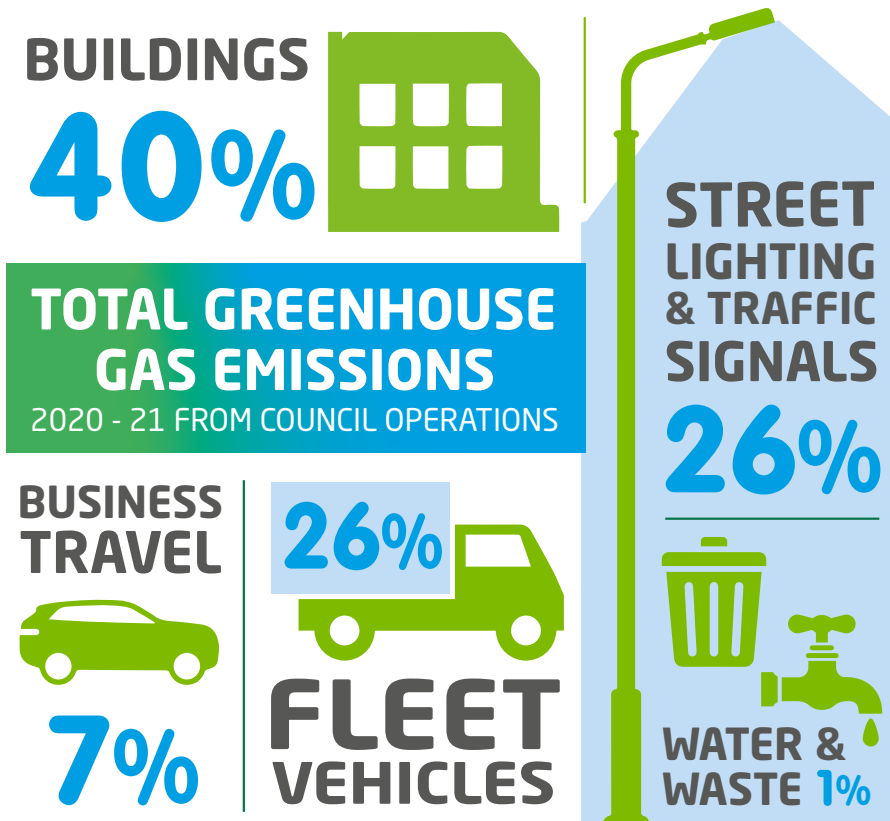
Since **2008-09** the County Council has reduced its operational greenhouse gas emissions (GHG)¹ by **74%**. In **2020-21** the Council reduced its greenhouse gases by over **19%** compared to **2019-20**.

08-09	35,778t
19-20	11,702t
20-21	9,434t



Net Zero
BY 2030

Main Sources of County Council Greenhouse Gas Emissions



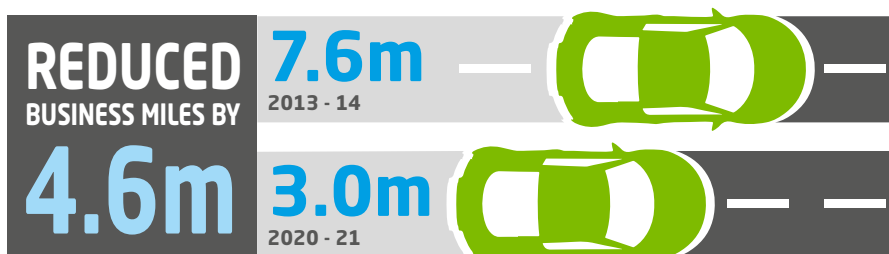
The main sources of greenhouse gas emissions for the County Council in **2020-21** were our buildings, streetlighting and traffic signals, operational fleet vehicles and staff business travel. Since **2019-20**, significant emissions reduction were seen across the Council's business travel, fleet and buildings – this came mostly as a result of Covid-19 impacts on Council operations and the shift to home working for many Council employees.



Renewable Energy

The amount of renewable energy generated on council land, as a percentage of total energy consumed, was **14%** in **2020-21**. Of that, **2%** was generated from solar power and **12%** from a biomass (woodchip) boiler. The generation of on-site renewable energy avoids 476 tCO₂e of emissions – equivalent to **5%** of the council's emissions.

Business Mileage



The Council has reduced its business miles by **4.6 million miles** since **2013-14** saving over **1,650 tonnes** of greenhouse gas emissions³.

Office Recycling

The County Council recycled **48%** of its total office waste in **2020-21**. Recycling performance dropped by **13%** compared to **2019-20**. This was mainly due to the impacts of Covid which reduced the amount of waste generated by **63%**, to just **133 tonnes**. There was also a reduction in the amount of recyclable waste generated, especially paper, compostable material and ICT equipment².



Footnotes:

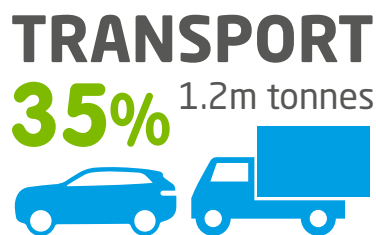
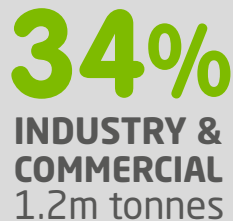
¹The GHG emissions consist of a mix of gases in addition to carbon dioxide, including methane, nitrous oxide, and hydrofluorocarbons. These make up our overall greenhouse gas figure, which is expressed as carbon dioxide equivalent or CO₂e. GHG reporting follows HM Government's Environmental Reporting Guidelines.

²Excludes waste from operational activities e.g. highways maintenance and forestry waste.

³The 3.0m figure for 2020-21 is currently an estimate due to incomplete data.

Leicestershire Environmental Performance

Leicestershire's Carbon Emissions

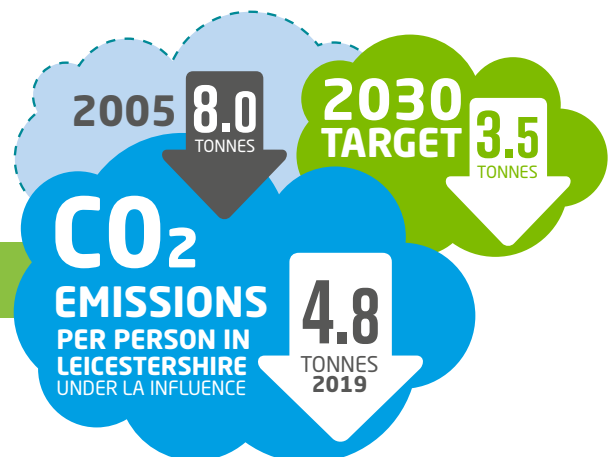


Based on figures provided by the Government⁴, the carbon emissions for Leicestershire considered to be 'under the influence' of local authorities were **3.4 million tonnes in 2019**.

Emissions are almost evenly split between industrial & commercial, transport, and domestic sources. Emissions have reduced by **33%** between **2005** and **2019**.

Carbon Emissions Per Person

The Government figures show that in **2005** each person in Leicestershire emitted the equivalent of **8 tonnes** of carbon. This reduced to **4.8 tonnes** in **2019** with a current target of reducing this to **3.5 tonnes by 2030**.



Household Waste & Recycling

There has been a steady decline in the total household waste generated per household since **2011-12**, with total household waste per household falling from **1,105 kg to 1,020 kg in 2020-21**, a reduction of almost **8%**.

The amount of household waste recycled in Leicestershire in **2020-21** was **43.3%**.



Footnotes:

⁴Data is provided by the Department of Business Energy and Industrial Strategy (BEIS) for all UK regions and is two years in arrears. This includes emissions from industrial and commercial activity, transport (except for emissions from motorway traffic and diesel railways), and from domestic sources (i.e. homes). Net emissions from forestry and land based industries are excluded. The data does not include large point source emissions from power stations.

Projects on the ground

5,  INTO ROAD SURFACING
TYRES RECYCLED **SAVING 30 tCO₂e**

Greener Bypass Resurfacing

Leicestershire County Council trialled new recycled and low carbon products and techniques in some of its highway improvements. These trials used **5,000 recycled tyres** and saved **30 tCO₂e**, compared to conventional resurfacing techniques. The Council's pilot project will go on to inform other local authorities as a case study on how to reduce emissions within highways projects across the UK.

BetterPoints Rewards Challenge

The Council's Choose How You Move BetterPoints rewards challenge during 2020-21 was taken up by over 3,800 people, undertaking over 278,700 activities, such as walking, cycling and taking the bus. This resulted in about 150 tonnes of carbon savings. The challenge which is powered by the BetterPoints App allows people to earn points for taking more sustainable journeys and to redeem them for high street vouchers, or to donate them to charity. For more information on the challenge visit [Choose How You Move](#).

Highway Verges Project

The County Council is supporting **41 parish councils** to maintain **54 verges** covering **14,068m²** of land to support grassland species. More parish councils will be supported in 2022 to enter the scheme. Within the verges surveyed **71 species** were found that are desirable in quality wildflower meadows. **97% of species** rich grassland lost in the last 50 years across the UK and unimproved grassland is one of Leicestershire's most vulnerable habitats.

71 SPECIES FOUND IN WILDFLOWER VERGES



Croft Quarry Restoration

Leicestershire County Council commissioned consultants to undertake a study of the greenhouse gas emissions associated with the transport of **14 million cubic metres** of inert construction, demolition and engineering waste by rail, over a 20-year period, for the restoration of Croft Quarry, located in Leicestershire. The study assessed on site emissions, those arising from the transport of the waste and calculated the carbon sequestration arising from the habitat restoration scheme. This is a positive example of where the carbon impact of a project has formed a material consideration in the planning decision making process.

Environment Matters

Want to keep informed of what is happening within Leicestershire County Council and beyond on **environmental and waste matters**? Why not sign up to get an electronic copy of our Environment Matters newsletter – Click on this link for more details: [Environment Matters sign up](#)

Climate Change Reading Lists

Interested in learning more about **Climate Change**? Why not use our climate change booklists. Enjoy learning about climate change from either the children's or adult booklists. For more information click [here](#).